

# MONTHLY MEMBERSHIP PROGRESS REPORT

LOCATION NEW ZEALAND

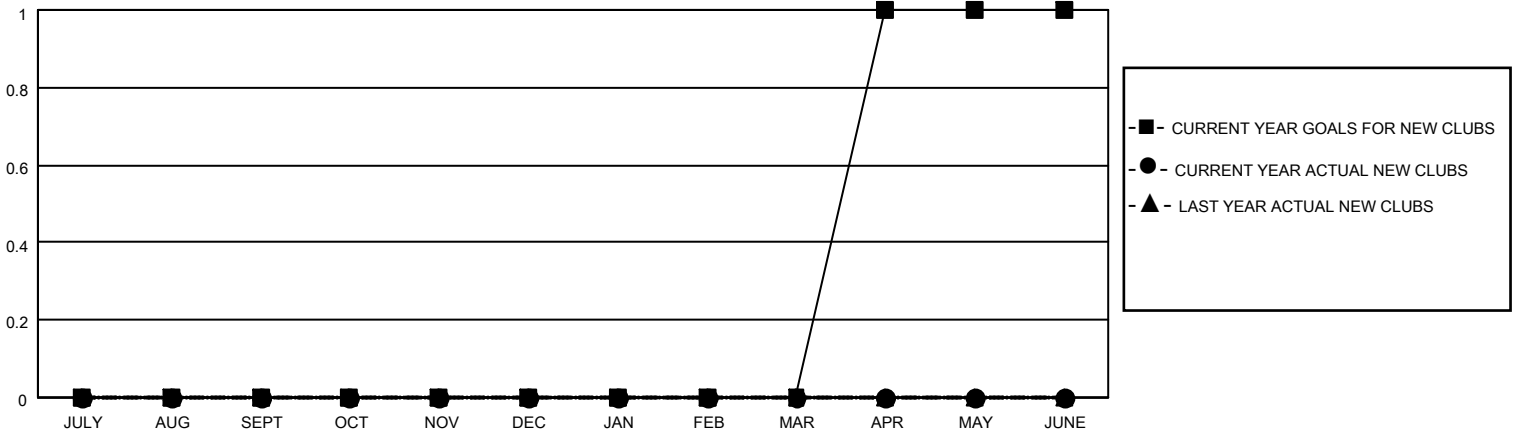
District 202 J

Results as of: 5/31/2022

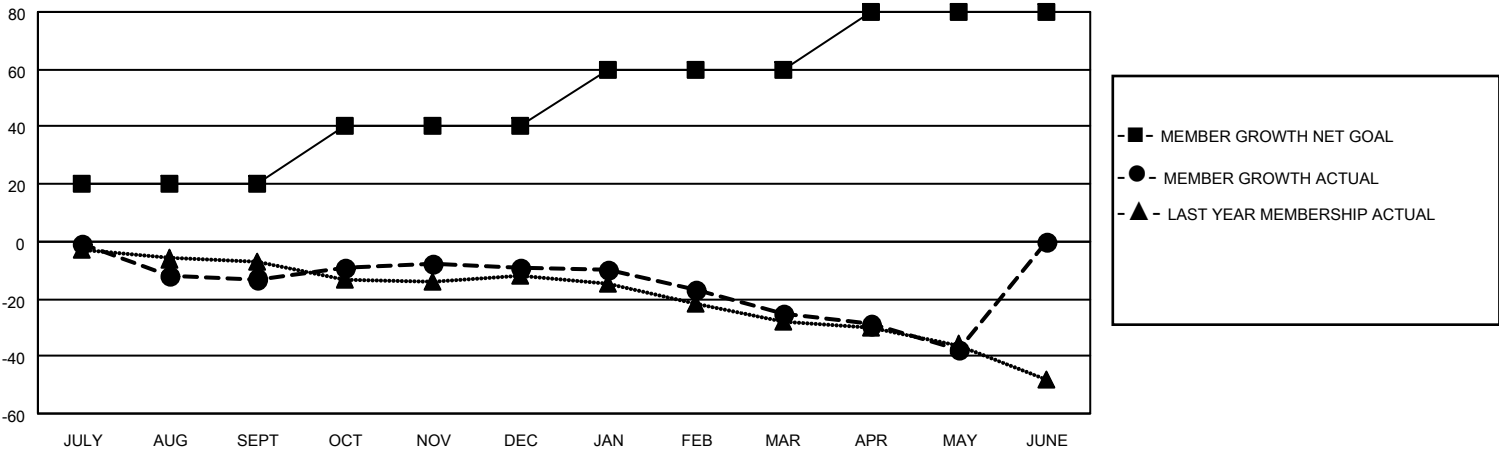
| Clubs                 |               |           |               |
|-----------------------|---------------|-----------|---------------|
| RESULTS FOR 2021-2022 |               |           |               |
| QUARTER               | NEW CLUB GOAL | NEW CLUBS | DROPPED CLUBS |
| JULY/AUG/SEPT         | 0             | 0         | 0             |
| OCT/NOV/DEC           | 0             | 0         | 0             |
| JAN/FEB/MAR           | 0             | 0         | 0             |
| APR/MAY/JUNE          | 1             | 0         | 0             |

| Members               |                        |                      |   |
|-----------------------|------------------------|----------------------|---|
| RESULTS FOR 2021-2022 |                        |                      |   |
| QUARTER               | MEMBER GROWTH NET GOAL | MEMBER GROWTH ACTUAL | DROPPED MEMBERS ACTUAL<br>(including transfers) |
| JULY/AUG/SEPT         | 20                     | 17                   | 28  |
| OCT/NOV/DEC           | 20                     | 27                   | 20  |
| JAN/FEB/MAR           | 20                     | 10                   | 24  |
| APR/MAY/JUNE          | 20                     | 4                    | 16  |

**GOALS AND ACTUAL NEW CLUBS CUMULATIVE**



**GOALS AND ACTUAL MEMBERS CUMULATIVE**



**DROPPED CLUBS: 0**

**20 CLUBS OF 33 ADDED 1 OR MORE NEW MEMBERS**

**GENDER DISTRIBUTION**

|                      |              |
|----------------------|--------------|
| MALE                 | 873 (74.49%) |
| FEMALE               | 299 (25.51%) |
| NON BINARY           | 0 (0.00%)    |
| PREFER NOT TO ANSWER | 0 (0.00%)    |

**DROPPED MEMBERS**

[CLICK HERE FOR CUMULATIVE MEMBERSHIP DATA](#)

|                |           |
|----------------|-----------|
| DECEASED       | 28        |
| CLUB CANCELLED | 0         |
| OTHER          | 60        |
| <b>TOTAL</b>   | <b>88</b> |

|                                 |    |
|---------------------------------|----|
| TOTAL FAMILY UNIT MEMBERS       | 46 |
| FAMILY MEMBERS PAYING HALF DUES | 23 |